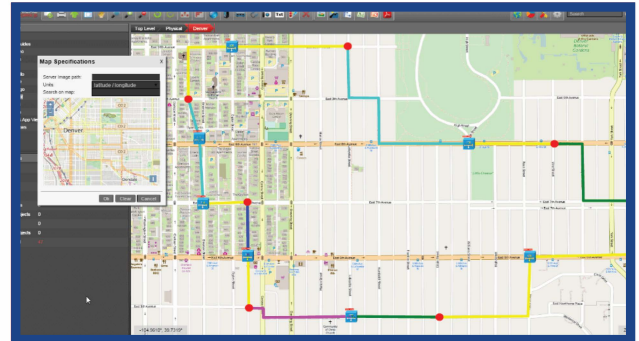


## Solve challenges in managing outside plant cabling and infrastructure with netTerrain OSP: a user-friendly and 100% web-based visualization software.

With this flexible platform, organizations can add any element to its maps and diagrams - from manholes to antennas to creating your own types of ducts (using GIS-enabled maps that offer exact positioning with 19 zoom levels and 6-decimal precision).

Decision makers gain access to a set of real-time diagrams and reports that facilitate aligning IT investments with business objectives through reduction of costs, improved service levels and the mitigation of risks.



### GIS-enabled Outside & Inside Plant in One Tool

netTerrain OSP provides cable management for the inside and outside plant. Measure distances between objects on maps, lengths of connections (including their bend points) and automatically place objects based on latitude/longitude values or city/town names. netTerrain OSP also allows data and maps from Google Earth (KMZ/KML) to be imported.



### Outside Plant Element Management

Place, view and search, with precision, any OSP elements, including: manholes, handholes, enclosures, conduits, patch panels, fiber trunks, splices, splitters and any custom object you'd like.

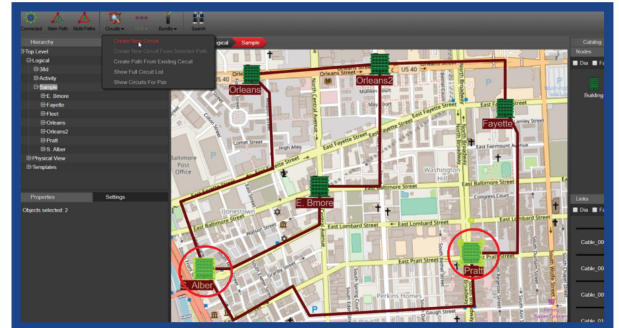
### Speed Up Troubleshooting & Deployment

- ▶ Reduce downtime by quickly identifying end-to-end connections.
- ▶ Pinpoint exact locations of each connection segment and element.
- ▶ Find any attributes you like in seconds with our quick search.
- ▶ Create circuits with simple drag and drops and map each assigned path down to the port level.

## Inside Plant Rack and Cable Management

Manage the data center and telco closets space, floorplan and racks, along with:

- ▶ Document fiber and copper inside the data center and buildings.
- ▶ Manage assets with unlimited properties and precise location and rack elevation views.
- ▶ Manage cables and circuits within the data center, including overhead tray occupancies and underfloor cabling.



## Capabilities & Benefits of Using netTerrain OSP

- ▶ Improve connection utilization and streamline capacity planning.
- ▶ Create end-to-end circuits and underlying paths; track how they traverse the network.
- ▶ Create redundant and diverse circuits based on an existing circuit.
- ▶ View circuit layout records for full connectivity paths, including the inside and outside plant hierarchies for each segment.
- ▶ OSPF-based circuit routing algorithm for automatic creation of optimum circuit paths.
- ▶ Tag any circuit by customer, ID, or any attribute you like.
- ▶ Easily visualize fill and occupancy rates of conduits, ducts, buffers by assigned fiber strand or other custom criteria.
- ▶ Use Work Order Management to create and manage tasks for new circuits.
- ▶ Assign strand counts to cables and they are created automatically.
- ▶ View any occupancy and capacity reports in table or dashboard form.
- ▶ Attach any documents to your OSP elements and manage them as you do in SharePoint.

