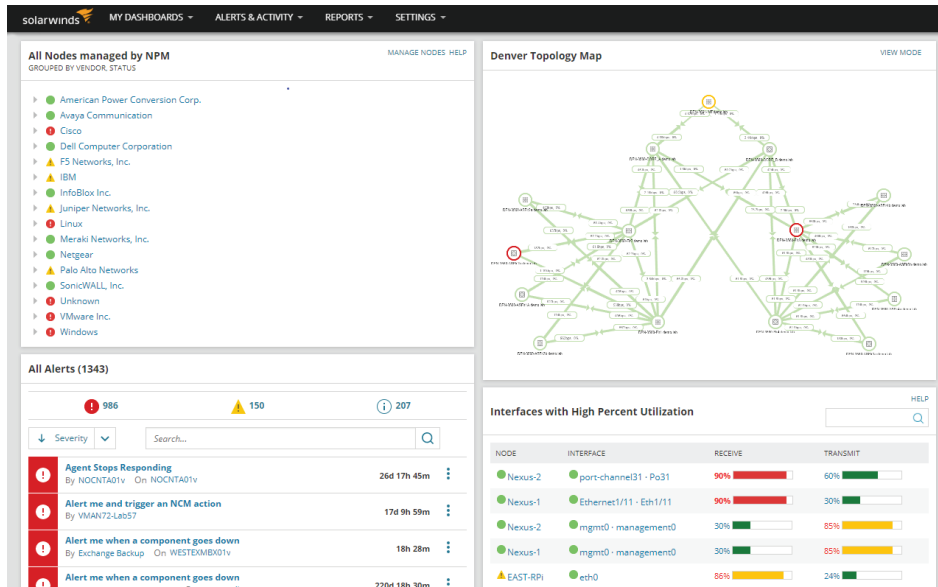


# Network Performance Monitor



Ultimate end-to-end visibility for your network.

SolarWinds® Network Performance Monitor (NPM) is a powerful and affordable network monitoring software enabling you to quickly detect, diagnose, and resolve network performance problems and outages.

## NETWORK PERFORMANCE MONITOR AT A GLANCE

- Speed troubleshooting, increase service levels, and reduce downtime with multi-vendor network monitoring
- Measure the health of the logical network in addition to the physical network with Cisco® ACI and Azure VNet gateway support
- Simplify the management of complex network devices by monitoring the right information for each device's unique role in the network with Network Insight™ features
- Critical path hop-by-hop analysis for on-premises, hybrid, and cloud services
- Cross-stack network data correlation for acceleration of problem identification with the PerfStack™ dashboard
- Improve operational efficiency with out-of-the-box dashboards, alerts, and reports

## FEATURES

### **NEW! Monitor Azure vNet gateway visibility**

Giving organizations the ability to troubleshoot VPN issues with a clear picture of both sides of their VPNs for improved connectivity.

### **NEW! Increased scalability**

Scale to up to 1 million elements per instance (with appropriate licenses)

### **Fault, performance, and availability monitoring**

Quickly detect, diagnose, and resolve network performance issues and avoid downtime with network optimization software.

### **NetPath™: Hop-by-hop analysis along critical paths**

View performance, traffic, and configuration details of devices and applications that are on-prem, in the cloud, or across hybrid environments.

### **PerfStack: Cross-stack network data correlation**

Accelerate identification of root cause by dragging and dropping network performance metrics on a common timeline for immediate visual correlation across all your network data.

### **Customizable topology- and dependency-aware intelligent alerts**

Respond to multiple condition checks, correlated events, network topology, and device dependencies.

### **Dynamic network discovery and mapping**

Automatically discover and map devices, performance metrics, link utilization, and wireless coverage.

### **Automated capacity forecasting, alerting, and reporting**

Automatically calculate exhaustion dates using customizable thresholds based on peak and average usage.

### **Logical and physical network monitoring in one tool**

Monitor logical components of the SDN environment, including APICs, tenants, application profiles, endpoint groups, and physical entities with Cisco ACI support.

### **Intelligent maps**

Intuitive aggregation and visualization of data helps you get to root cause faster, even in complex environments.

### **Comprehensive monitoring for advanced network devices**

Visualize and gain insight into the health and performance of your F5® BIG-IP® load balancers, Cisco ASA and Palo Alto Networks® firewalls, and Cisco Nexus switches with Network Insight features.

### **End-user quality of experience with packet capture and analysis**

Determine if changes in end-user experience are caused by the application or the network.

### **Dynamic statistical network performance baselines**

Dynamically calculate baseline thresholds from historical network performance data.

### **Hardware health monitoring**

Monitor, alert, and report on key device metrics, including temperature, fan speed, and power supply.

### **Customizable performance and availability reports**

Schedule and generate custom network performance reports with one of over 100 out-of-the-box templates.

### **Easy-to-try, easy-to-buy, easy-to-use network monitoring software**

Enjoy a free, fully functional 30-day trial, consultant and services-free deployment, and customizable web-based network performance dashboards, views, and charts.

## **SYSTEM REQUIREMENTS**

Orion Platform products can be deployed on physical or virtual servers on-premises or in the cloud. These products can also be deployed via Azure or AWS marketplaces. For detailed system requirements, visit [support.solarwinds.com](https://support.solarwinds.com).

*NOTE: The minimum server requirements listed assume default configuration. Significantly increasing the poll rate or statistic collection rate could result in additional load on the server, which may require a larger CPU or additional memory.*

## ABOUT SOLARWINDS

SolarWinds (NYSE:SWI) is a leading provider of simple, powerful, and secure IT management software. Our solutions give organizations worldwide—regardless of type, size, or complexity—the power to accelerate business transformation in today’s hybrid IT environments. We continuously engage with technology professionals— IT service and operations professionals, DevOps and SecOps professionals, and Database Administrators (DBAs) – to understand the challenges they face in maintaining high-performing and highly available IT infrastructures, applications, and environments. The insights we gain from them, in places like our **THWACK** community, allow us to address customers’ needs now, and in the future. Our focus on the user and commitment to excellence in end-to-end hybrid IT management has established SolarWinds as a worldwide leader in solutions for observability, IT service management, application performance, and database management. Learn more today at [www.solarwinds.com](http://www.solarwinds.com).

**TRY IT FREE**

30 days, full version

## ABOUT LOOP1

Loop1 is a leading global IT Operations Management (ITOM) company specializing in the SolarWinds ITOM product offerings—we offer the most comprehensive training and professional services for SolarWinds clients across the globe. Headquartered in Austin, TX, United States, with offices in the United Kingdom, Ireland, Germany, Sri Lanka, and Singapore, the group has more than 100 employees across four continents, clients in more than 60 countries, and 25+ SolarWinds Certified Professional (SCP) engineers, holding 130+ individual certifications.



**A SOLARWINDS ELITE PARTNER**

### CONTACT US

**US** +1 (877) 591-1110

**UK** +44 (0)1285 647900

**IRE** +353 (0)21 601 7548

[www.loop1.com](http://www.loop1.com) | [info@loop1.com](mailto:info@loop1.com)



For additional information, please contact SolarWinds at 866.530.8100 or email [sales@solarwinds.com](mailto:sales@solarwinds.com).

To locate an international reseller near you, visit [http://www.solarwinds.com/partners/reseller\\_locator.aspx](http://www.solarwinds.com/partners/reseller_locator.aspx)

© 2020 SolarWinds Worldwide, LLC. All rights reserved

The SolarWinds, SolarWinds & Design, Orion, and THWACK trademarks are the exclusive property of SolarWinds Worldwide, LLC or its affiliates, are registered with the U.S. Patent and Trademark Office, and may be registered or pending registration in other countries. All other SolarWinds trademarks, service marks, and logos may be common law marks or are registered or pending registration. All other trademarks mentioned herein are used for identification purposes only and are trademarks of (and may be registered trademarks) of their respective companies.

This document may not be reproduced by any means nor modified, decompiled, disassembled, published or distributed, in whole or in part, or translated to any electronic medium or other means without the prior written consent of SolarWinds. All right, title, and interest in and to the software, services, and documentation are and shall remain the exclusive property of SolarWinds, its affiliates, and/or its respective licensors.

SOLARWINDS DISCLAIMS ALL WARRANTIES, CONDITIONS, OR OTHER TERMS, EXPRESS OR IMPLIED, STATUTORY OR OTHERWISE, ON THE DOCUMENTATION, INCLUDING WITHOUT LIMITATION NON-INFRINGEMENT, ACCURACY, COMPLETENESS, OR USEFULNESS OF ANY INFORMATION CONTAINED HEREIN. IN NO EVENT SHALL SOLARWINDS, ITS SUPPLIERS, NOR ITS LICENSORS BE LIABLE FOR ANY DAMAGES, WHETHER ARISING IN TORT, CONTRACT OR ANY OTHER LEGAL THEORY, EVEN IF SOLARWINDS HAS BEEN ADVISED OF THE POSSIBILITY OF SUCH DAMAGES.