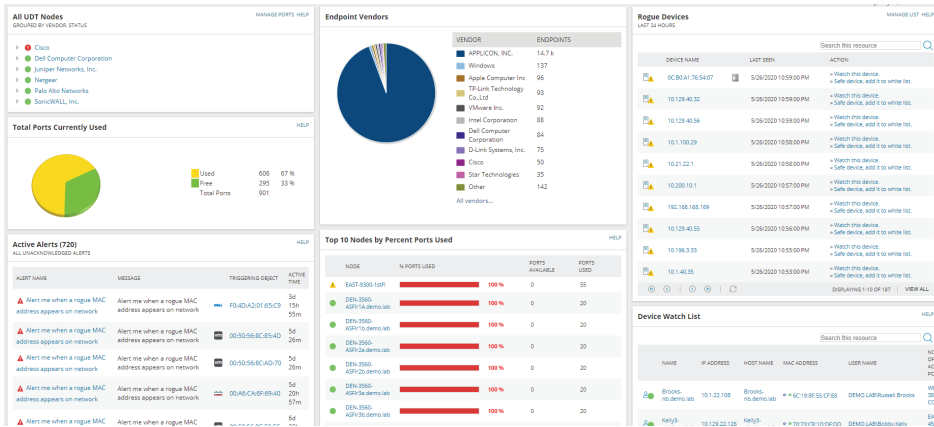


# User Device Tracker

## Automated Device Tracking and Switch Port Management



SolarWinds® User Device Tracker (UDT) is designed to help you manage risks and network access requirements associated with the rise of IP devices. UDT delivers automated user and device tracking along with powerful switch port management capabilities so you can stay in control of who and what connects to your network. Quickly find a computer or user, and track down lost or rogue devices with a simple search on a username, IP address, hostname, or MAC address.

## WHY CHOOSE USER DEVICE TRACKER?

- Get visibility of devices directly connected at the SD-WAN edge, improving operations and performance analysis
- Automatically discovers, maps, and monitors switches, ports, and network devices
- Quickly locates users and devices on your network
- Tracks used and free ports on switches and easily identifies switches operating at near capacity
- Delivers whitelist and watch list functionality with automatic alerts and click-of-a-button port shutdown
- Provides extensive device connection and user logon data to investigate incidents
- Generates user and device reports using customizable out-of-the-box templates

## FEATURES

### **Supports SD-WAN Coverage for Viptela vEdge**

Get a detailed port connection history for Viptela vEdge devices, and monitor for new connected devices for operations management and performance analysis.

### **Quickly Locate Network Devices**

Manually tracking and locating a missing or unknown device takes hours of searching, and may or may not be successful. Quickly find network devices and retrieve switch name, port, port description, VLAN, VRF data, vendor information, and more. UDT helps you easily track down device locations on your LAN and wireless network.

For more effective troubleshooting, UDT integrates with SolarWinds [IP Address Manager \(IPAM\)](#) to provide you with detailed information on IP-related data along with endpoint details.

### **Support for Cisco Nexus and Palo Alto Networks**

Network Insight™ for Palo Alto devices allows you to see which devices are connected to your Palo Alto firewall, giving you enhanced device tracking details. Discover and collect device data from ports through Command Line Interface (CLI) parsing for Cisco Nexus. Device port mapping through CLI offers discovery and collection from Nexus devices.

### **Trace and Block Unauthorized Users**

Easily identify and locate unauthorized users. SolarWinds UDT helps you quickly find rogue users on the LAN or wireless network. By retrieving current and past connection information, you can quickly verify if the device is unauthorized.

SolarWinds UDT also seamlessly integrates with SolarWinds [NetFlow Traffic Analyzer \(NTA\)](#). This helps you easily identify, locate, and block devices/users who unnecessarily hog network bandwidth.

### **Map and Monitor Switch Ports**

SolarWinds UDT allows you to easily discover switches operating at near capacity, as well as switches from which you can reclaim unused ports. This helps you make more informed capacity planning and purchase decisions. UDT helps you with in-depth insight into port status and usage, CPU load, memory used, and more.

### **Network User and Device Watch List**

Create a device watch list by MAC address, IP address, or hostname for both your wired and wireless devices. By tagging the suspicious device through UDT, you receive an alert the next time the specified device/user connects to the network.

### **Device Whitelisting**

Constantly monitor device/user network access with the whitelisting feature. Identify “safe” and “rogue” devices attempting to access the network. Devices not on the whitelist appear in the Rogue Devices resource list and an alert is generated automatically.

### **Automated Switch Port Discovery**

SolarWinds UDT begins monitoring devices immediately and saves you time and effort on tracking devices operating on the network. You can schedule regular scans to automatically discover new devices and ensure you have an up-to-date view of your network.

### **Remote Port Shutdown**

SolarWinds UDT allows you to remotely shut down a compromised network device port with point-and-click simplicity. Actively control who and what connects to your network. When a rogue device is detected, you can simply shut down the port to mitigate security risks or prevent network problems.

### **Customizable Network User and Device Reports**

Create user and device reports using out-of-the-box and community-generated templates. UDT includes automated report notifications to provide your management team with relevant information.

## **SYSTEM REQUIREMENTS**

For detailed system requirements, please visit [support.solarwinds.com](https://support.solarwinds.com)

## **TRY BEFORE YOU BUY. DOWNLOAD A FREE TRIAL.**

User and device tracking have never been easier. Don't just take our word for it. Download a free 30-day trial, and in about an hour, you can start quickly tracking down users and devices on your network, detecting rogue devices, and making informed resource-planning decisions by monitoring switch port usage.

## ABOUT SOLARWINDS

SolarWinds (NYSE:SWI) is a leading provider of simple, powerful, and secure IT management software. Our solutions give organizations worldwide—regardless of type, size, or complexity—the power to accelerate business transformation in today’s hybrid IT environments. We continuously engage with technology professionals— IT service and operations professionals, DevOps and SecOps professionals, and Database Administrators (DBAs) – to understand the challenges they face in maintaining high-performing and highly available IT infrastructures, applications, and environments. The insights we gain from them, in places like our **THWACK** community, allow us to address customers’ needs now, and in the future. Our focus on the user and commitment to excellence in end-to-end hybrid IT management has established SolarWinds as a worldwide leader in solutions for observability, IT service management, application performance, and database management. Learn more today at [www.solarwinds.com](http://www.solarwinds.com).

**TRY IT FREE**

30 days, full version

## ABOUT LOOP1

Loop1 is a leading global IT Operations Management (ITOM) company specializing in the SolarWinds ITOM product offerings—we offer the most comprehensive training and professional services for SolarWinds clients across the globe. Headquartered in Austin, TX, United States, with offices in the United Kingdom, Ireland, Germany, Sri Lanka, and Singapore, the group has more than 100 employees across four continents, clients in more than 60 countries, and 25+ SolarWinds Certified Professional (SCP) engineers, holding 130+ individual certifications.



**A SOLARWINDS ELITE PARTNER**

### CONTACT US

**US** +1 (877) 591-1110

**UK** +44 (0)1285 647900

**IRE** +353 (0)21 601 7548

[www.loop1.com](http://www.loop1.com) | [info@loop1.com](mailto:info@loop1.com)



*For additional information, please contact SolarWinds at 866.530.8100 or email [sales@solarwinds.com](mailto:sales@solarwinds.com).*

*To locate an international reseller near you, visit [http://www.solarwinds.com/partners/reseller\\_locator.asp](http://www.solarwinds.com/partners/reseller_locator.asp)*

© 2020 SolarWinds Worldwide, LLC. All rights reserved

The SolarWinds, SolarWinds & Design, Orion, and THWACK trademarks are the exclusive property of SolarWinds Worldwide, LLC or its affiliates, are registered with the U.S. Patent and Trademark Office, and may be registered or pending registration in other countries. All other SolarWinds trademarks, service marks, and logos may be common law marks or are registered or pending registration. All other trademarks mentioned herein are used for identification purposes only and are trademarks of (and may be registered trademarks) of their respective companies.

This document may not be reproduced by any means nor modified, decompiled, disassembled, published or distributed, in whole or in part, or translated to any electronic medium or other means without the prior written consent of SolarWinds. All right, title, and interest in and to the software, services, and documentation are and shall remain the exclusive property of SolarWinds, its affiliates, and/or its respective licensors.

SOLARWINDS DISCLAIMS ALL WARRANTIES, CONDITIONS, OR OTHER TERMS, EXPRESS OR IMPLIED, STATUTORY OR OTHERWISE, ON THE DOCUMENTATION, INCLUDING WITHOUT LIMITATION NONINFRINGEMENT, ACCURACY, COMPLETENESS, OR USEFULNESS OF ANY INFORMATION CONTAINED HEREIN. IN NO EVENT SHALL SOLARWINDS, ITS SUPPLIERS, NOR ITS LICENSORS BE LIABLE FOR ANY DAMAGES, WHETHER ARISING IN TORT, CONTRACT OR ANY OTHER LEGAL THEORY, EVEN IF SOLARWINDS HAS BEEN ADVISED OF THE POSSIBILITY OF SUCH DAMAGES.