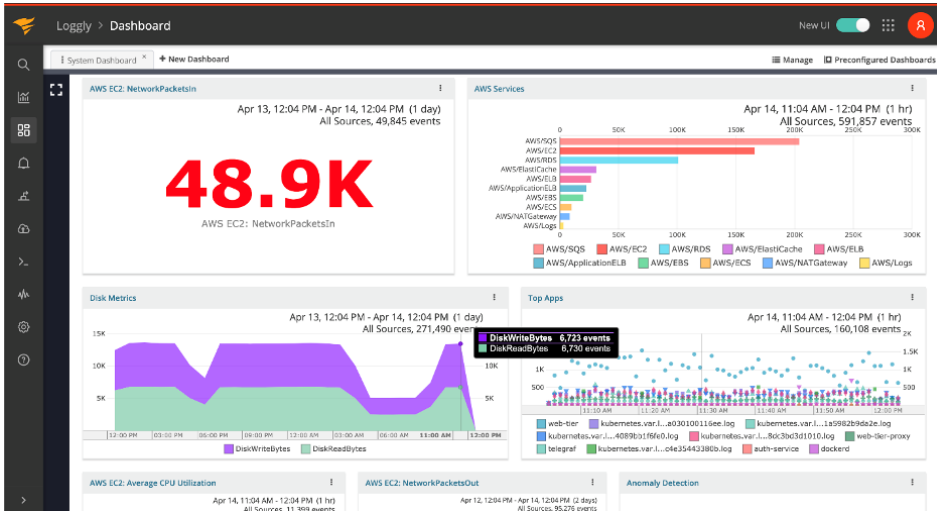


SolarWinds Loggly

Unified Log Management, Monitoring, and Analysis



Who it's for:

- IT Ops
- SRE/DevOps
- Developers
- Application support

With infrastructure and application environments spanning on-premises, hybrid, and public cloud environments, IT operations, application, and SRE teams are inundated with unrelated events, issues, and logs. Every outage or slowdown directly impacts the business, either in lost productivity or lost revenue. Issues must be diagnosed rapidly and resolved across all the dynamically changing components underpinning your heterogeneous web applications, services, and infrastructure.

SolarWinds® Loggly® is a cost-effective, hosted, and scalable full-stack, multi-source log management solution combining powerful search and analytics with comprehensive alerting, dashboarding, and reporting to proactively identify problems and significantly reduce Mean Time to Repair (MTTR).

LOGGLY AT A GLANCE

- Full-stack, multi-source log aggregation, log monitoring, and data analytics
- Log analytics show events in context, highlight patterns, and detect anomalies for deeper insights
- Highly scalable to ingest massive data volumes and help enable quick searching across large and complex environments
- Spot usage patterns with application, service, and infrastructure-aligned historical analysis of user, log, and infrastructure data
- Manage by exception by identifying variations from normal with powerful log formatting and analytic search capabilities
- Accelerate troubleshooting with out-of-the-box metrics and dashboards, broad language support, and contextualized searching and live tail across logs and data
- Combine metrics, traces, and logs together to enhance observability and accelerate troubleshooting with tight integration between SolarWinds AppOptics™ and Loggly

“ I really like how Loggly lets you drill down into information. Unlike other tools, Loggly shows you the area to start with and gives you the ability to drill down and filter based on tags. This is really powerful. ”

— Jeff Fouchard
senior DevOps engineer, Fullscript



A SOLARWINDS PARTNER

FEATURES

Highly responsive search at scale

Process large volumes of data to quickly search across large and complex environments to see interconnected services, events, and issues.

Interactive shareable dashboards

Easily build dashboards to monitor application health, behavior, and trends, or use one of our prebuilt dashboards to monitor performance indicators (KPIs) and statistics. Send dashboards to anyone via email or collaboration systems like HipChat® or Slack®.

Anomaly detection and alerts

Loggly learns the normal patterns in your log data and shows deviations, so you can discover unexpected or suspicious events before they turn into problems. Create alerts based on search patterns, thresholds for specific log metrics, or other conditions.

Dynamic Field Explorer

The hardest problems to fix are the ones you least expect to happen. The Loggly Dynamic Field Explorer™ automatically analyzes and pre-summarizes your log data as it's received to let you gain insight before setting up a single query. Spot unusual event counts or outliers and drill down into the relevant data with a few mouse clicks.

Rapidly pinpoint bottlenecks and failure points

Using surround search capabilities—see events in operational context across all aggregated logs.

Collaborate with all stakeholders

Loggly provides easy-to-use and customizable dashboards and visualizations of aggregated data across the stack.

Shared agent collects metrics and logs

Spend less time setting up and start troubleshooting faster with a common intelligent agent (shared with SolarWinds AppOptics) that provides a new way to collect logs from custom applications, filter those log files, and collect metrics.

Integrated With AppOptics

Achieve maximum observability with time-series infrastructure and application performance data integrated with your log management. SolarWinds® AppOptics™ automatically appends a unique trace ID to log lines associated with a specific trace for simple, fast troubleshooting – from application performance to related log events. The integration also provides trace context in SolarWinds Loggly® by searching on the trace ID from a log line you're interested in and getting log lines associated with the trace ID in your search results. The result? Significantly reduced application performance troubleshooting time.

Loggly collects logs from dozens of resources, including:



CHALLENGES ADDRESSED:

- Rapidly triage infrastructure and application issues across the stack to pinpoint true root cause and ownership—speeding MTTR and helping prevent issues before they affect users or cause costly downtime.
- Achieve the insights required to deliver the data that matters to IT operations, DevOps, and the business across disparate sources of machine data. Enable the shared understanding required across the organization to reduce, and proactively prevent, customer-impacting disruptions and outages.
- Be confident your log management tool and process will scale with your business, providing visibility into all layers of your application and service environment while integrating with your existing IT operations procedures.
- Maximum observability through tight integration with Infrastructure and Application Performance Monitoring (powered by SolarWinds AppOptics) functionality.

Loggly Features by Package	Standard	Professional	Enterprise
	Starting at \$79/mo.* billed annually	Starting at \$159/mo.* billed annually	Starting at \$279/mo.* billed annually
Centralized log management	✓	✓	✓
Automated log summaries	✓	✓	✓
Search and filters	✓	✓	✓
Single user	Up to 3 users	Up to 5 users	Unlimited users
Up to three source groups	✓	Up to 5 source groups	Unlimited source groups
Built-in email alerting	✓	✓	✓
Fast monitoring with charts and dashboards	✓	✓	✓
Direct access to support team	✓	✓	✓
Custom derived field rules		Up to 10 rules	Unlimited
Alerts: Email, webhook, third-party notification systems		✓	✓
API access		✓	✓
Archive to Amazon S3		✓	✓
Peak overage protection		✓	✓
Variable custom volume (up to TBs)			✓
Custom retention periods			✓
Technical success management			✓
Loggly live tail			✓
Integration with GitHub®			✓
Integration with JIRA® software			✓
Anomaly detection			✓
Federated identity			✓

*All prices in USD as of 01/01/2020

ABOUT SOLARWINDS

SolarWinds (NYSE:SWI) is a leading provider of powerful and affordable IT infrastructure management software. Our products give organizations worldwide, regardless of type, size, or IT infrastructure complexity, the power to monitor and manage the performance of their IT environments, whether on-prem, in the cloud, or in hybrid models. We continuously engage with all types of technology professionals—IT operations professionals, DevOps professionals, and managed service providers (MSPs)—to understand the challenges they face maintaining high-performing and highly available IT infrastructures. The insights we gain from engaging with them, in places like our **THWACK** online community, allow us to build products that solve well-understood IT management challenges in ways that technology professionals want them solved. This focus on the user and commitment to excellence in end-to-end hybrid IT performance management has established SolarWinds as a worldwide leader in network management software and MSP solutions. Learn more today at www.solarwinds.com.

ABOUT LOOP1

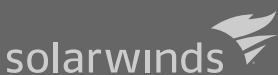
Loop1, LLC, is a leading global IT Operations Management (ITOM) company specialising in the SolarWinds ITOM product offering; and Cisco Premier Partner with specialisations in enterprise networking, unified communications, and Webex collaboration. Headquartered in Austin TX, United States, with offices in the United Kingdom, Ireland, Australia, Sri Lanka and Singapore; the group has more than 100 employees across 4 continents, clients in more than 60 countries and 50+ SolarWinds and Cisco-Certified Professional engineers. Learn more today at www.loop1.com | info@loop1.com



A SOLARWINDS PARTNER

CONTACT US

US +1 (877) 591-1110
UK +44 (0)1285 647900
IRE +353 (0)21 601 7548
APJ +61 3 8579 5600



*For additional information, please contact SolarWinds at 866.530.8100 or email sales@solarwinds.com.
To locate an international reseller near you, visit http://www.solarwinds.com/partners/reseller_locator.asp*

© 2020 SolarWinds Worldwide, LLC. All rights reserved

The SolarWinds, SolarWinds & Design, Orion, and THWACK trademarks are the exclusive property of SolarWinds Worldwide, LLC or its affiliates, are registered with the U.S. Patent and Trademark Office, and may be registered or pending registration in other countries. All other SolarWinds trademarks, service marks, and logos may be common law marks or are registered or pending registration. All other trademarks mentioned herein are used for identification purposes only and are trademarks of (and may be registered trademarks) of their respective companies.

This document may not be reproduced by any means nor modified, decompiled, disassembled, published or distributed, in whole or in part, or translated to any electronic medium or other means without the prior written consent of SolarWinds. All right, title, and interest in and to the software, services, and documentation are and shall remain the exclusive property of SolarWinds, its affiliates, and/or its respective licensors.

SOLARWINDS DISCLAIMS ALL WARRANTIES, CONDITIONS, OR OTHER TERMS, EXPRESS OR IMPLIED, STATUTORY OR OTHERWISE, ON THE DOCUMENTATION, INCLUDING WITHOUT LIMITATION NONINFRINGEMENT, ACCURACY, COMPLETENESS, OR USEFULNESS OF ANY INFORMATION CONTAINED HEREIN. IN NO EVENT SHALL SOLARWINDS, ITS SUPPLIERS, NOR ITS LICENSORS BE LIABLE FOR ANY DAMAGES, WHETHER ARISING IN TORT, CONTRACT OR ANY OTHER LEGAL THEORY, EVEN IF SOLARWINDS HAS BEEN ADVISED OF THE POSSIBILITY OF SUCH DAMAGES.